

# SELECTIVE CONFORMAL COATING AND CURING SOLUTIONS

## UV CURING OVENS CFUV SERIES

RELIABLE, ACCURATE AND EASY MAINTENANCE SOLUTIONS

UV CURING STATIONS FOR CONFORMAL COATINGS AND ADHESIVES

- EFFICIENT UV CURING OVENS FOR ALL TYPES OF UV ADHESIVES, UV VARNISHES, EPOXYS AND UV POLYURETHANES, ETC.
- 6 OR 10 UV LAMPS (CFUV6 OR CFUV10 RESPECTIVELY) TO COVER A WIDE RANGE OF SURFACES AND SHAPES.
- ADJUSTABLE DISTANCE BETWEEN LAMPS (MANUAL BALL SCREW, AUTOMATIC OPTIONAL) AND SUBSTRATE TO USE THE MAXIMUM LEVEL OF ABSORPTION OF ENERGY.
- AUTOMATIC ENTRY AND EXIT DOORS TO AVOID EXTERIOR INTERACTIONS.
- AVAILABLE LAMPS:

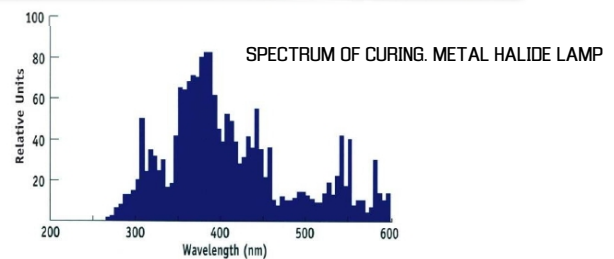
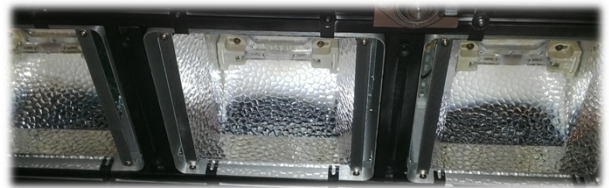
ENERGY 105 - 150 mW / CM<sup>2</sup>. CURING AREA 250X250MM.  
ENERGETIC DENSITY: 120 W / CM  
(OTHER HOUSING MEASURES AVAILABLE)



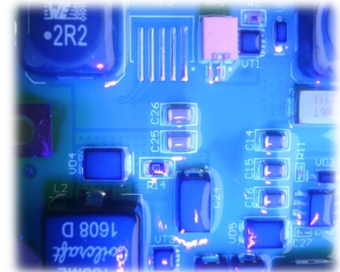
CFUV6 MODEL WITH CHAIN CONVEYOR



CFUV6 MODEL WITH BELT CONVEYOR



CF3951L + CFUV6

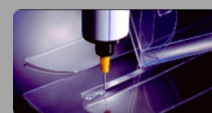


VIDEO APP CFUV6 OVEN CHAIN CONVEYOR: <https://youtu.be/2bMEplm-yz4>

VIDEO APP CFUV6 OVEN BELT: [https://youtu.be/Gx51q\\_b4Ak0](https://youtu.be/Gx51q_b4Ak0)

VIDEO FULL UV COATING LINE TOP AND BOTTOM: <https://youtu.be/LXa8qLEk2PQ>

MATERIALS: CONFORMAL COATINGS, ACRYLICS, URETHANES, SILICONES, RTV, BI-COMPONENTS MATERIALS, ETC.



# UV OVENS CFUV SERIES ESPECIFICATIONS

## RELIABLE, ACCURATE AND EASY MAINTENANCE SOLUTIONS

### GENERAL SPECIFICATIONS INCLUDED

#### STATIONS LENGTH

- CFUV6: 1.0 METERS (CURING TUNEL 920 MM)
- CFUV10: 1.6 METERS (CURING TUNEL 1500 MM)

#### UV LAMPS

- 6 o 10 UNITS (CFUV6 OR CFUV10 RESPECTIVELY) HALIDE METAL (105-150 mW/CM<sup>2</sup>)(250X250 MM CURING AREA PER UNIT.) OTHER MODELS AVAILABLE. ENERGETIC DENSITY: 120 W / CM (OTHER HOUSING MEASURES AVAILABLE)
- HEIGHT LAMPS ADJUSTABLE BY HAND ( AUTOMATIC OPTIONAL)

#### CONVEYOR

- CHAIN OR BELT CONVEYOR SPEED ADJSUTABLE FROM 0.02 TO 2 M/MIN (OTHER RANGES AVALAIBLE).
- WIDTH CONVEYOR ADJUSTABLE (CHAIN) FROM 50 TO 500 MM MANUAL, AUTOMATIC SYSTEM OPTIONAL.
- CHAIN PINS **BOARD CLEARANCE**: 5 MM. OTHER CLEARANCES AVALAIBLE.
- COMPONENT CLEARANCE UP TO 80 MM (BELOW AND ABOVE)
- SHEMA COMMUNICATION FROM UPPER AND LOWER MACHINES
- MECHANIC LUBRICATOR PROGRAMABLE (AUTOLUBE SYSTEM OPTIONAL)

#### WORKING MODES

- CONTINUOUS SHEMA (ADJUSTABLE SPEED FROM 0.02 A 2.0 M/MIN)
- PASS-THROUGHT SHEMA

#### CONTROL

- TOUCH SCREEN HMI
- SPEED CONTROL
- TURN ON AND OFF LAMPS

#### SOFTWARE

- DRYcontrol UV 6 INCLUDED

#### POWER SUPPLY

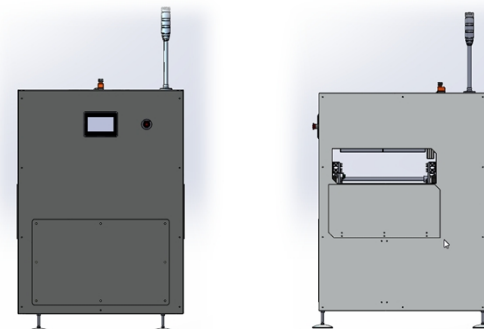
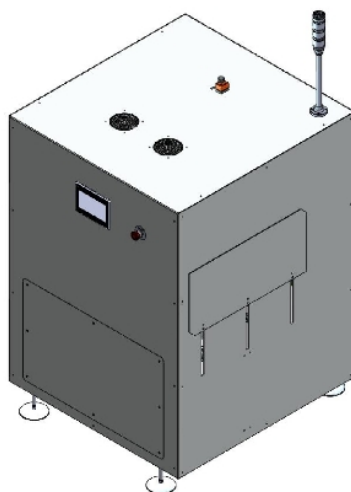
- 110/220V. 20 A MAX. 50-60

#### SECURITY

- EMERGENCY BUTTON
- SECURITY INTERLOCKS IN REAR DOOR

#### CERTIFICATION

- CE Y SHEMA



### OPTIONAL EQUIPMENT

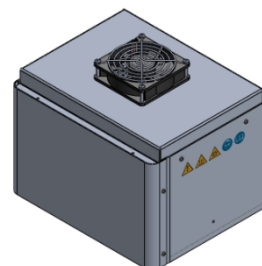
- AUTOMATIC CONVEYOR WIDTH AJUSTMENT BY SOFT
- AUTOMATIC CONVEYOR LUBRICATION SYSTEM "AUTOLUBE"
- AUTOMATIC TRAFIC BOARDS CONTROL
- CONVEYOR: "LEFT TO RIGHT" OR "RIGHT TO LEFT"
- AUTOMATIC HEIGH CONTROL BY SOFT
- SOFTWARE AVALAIBLE IN LOCAL LANGUAJES
- CONFORMAL COATING/DISPENSING IN LINE CF395IL
- FLUSH OFF / INSPECTION STATIONS



### INTERNATIONAL SALES DEPARTMENT

TEL. +34 925 258 073  
FAX +34 925 581 457  
coatflow@coatflow.com  
[www.coatflow.com](http://www.coatflow.com)  
[www.innomelt.com](http://www.innomelt.com)

### LOCAL DISTRIBUTOR



# SELECTIVE CONFORMAL COATING AND CURING SOLUTIONS

## UV OVENS CFUV SERIES BENCHTOP

### RELIABLE, ACCURATE AND EASY MAINTENANCE SOLUTIONS

- EFFICIENT UV CURING FURNACES FOR ALL TYPES OF UV ADHESIVES, UV VARNISHES, EPOXYS AND UV POLYURETHANES, ETC.
- THIS MODEL IS MANUFACTURED FOR 1 OR 2 LAMPS.
- TOUCH SCREEN WITH CURING TIME CONTROL, I / O CONTROL, COUNTER NUMBER OF BOARDS PER DAY, ETC.
- ADJUSTABLE DISTANCE BETWEEN LAMPS (70 - 350 mm)) AND SUBSTRATE TO USE THE MAXIMUM LEVEL OF ENERGY ABSORPTION.

#### AVAILABLE LAMPS:

ENERGY 105 - 150 mW / CM<sup>2</sup>. CURING AREA 250X250MM.  
ENERGETIC DENSITY: 120 W / CM  
(OTHER HOUSING MEASURES AVAILABLE)

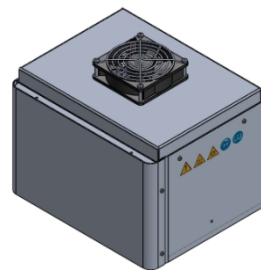
- MODEL CFUV1 HAS A LAMP AND ONE CONTROL AREA.
- MODEL CFUV2 HAS TWO LAMPS AND TWO INDEPENDENT CONTROL ZONES.



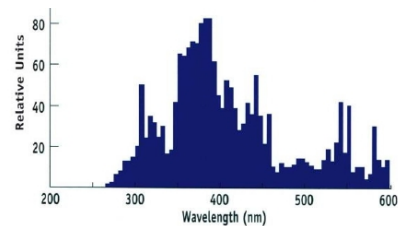
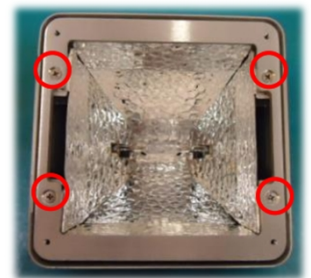
CFUV2 OVEN BENCHTOP



AUTOMATIC LOADING SYSTEM ADJUSTABLE FIXTURE.

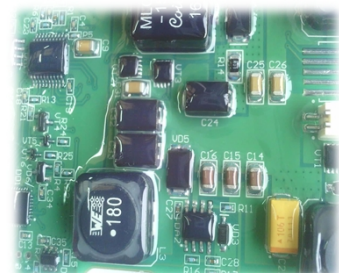


UV LAMPS

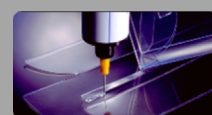


SPECTRUM OF CURING. METAL HALIDE LAMP

VIDEO APP CFUV2 OVEN <https://youtu.be/h6VTB8qu4sg>



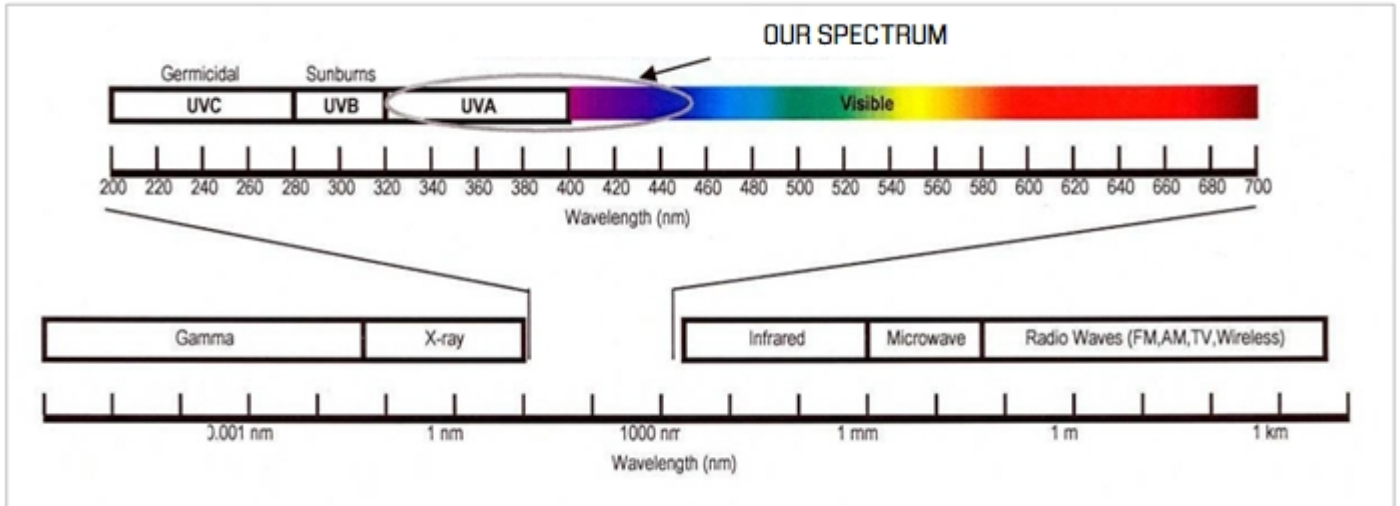
MATERIALS: CONFORMAL COATINGS, ACRYLICS, URETHANES, SILICONES, RTV, BI-COMPONENTS MATERIALS, ETC.



# UV LAMPS ESPECIFICATIONS

RELIABLE, ACCURATE AND EASY MAINTENANCE SOLUTIONS

OUR CURING SYSTEMS INCLUDE BULBS DESIGNED SPECIFICALLY TO EMIT UVA LIGHT. THIS RANGE OF LIGHT IS GENERALLY CONSIDERED AS THE MOST SECURED DENTR OF THE UV LIGHT RANGES. THEY ARE SPECIFICALLY DEVELOPED TO ENJOY MAXIMUM CURAOD ENERGY IN ORGANIC MATERIALS, SUCH AS ADHESIVES, VARNISHES, INKS, ETC.



## BULB MODELS

WE HAVE 3 TYPES OF BULB BASED ON THE SPECIFIC APPLICATION (DEPENDS MAINLY THAT PART OF THE SPECTRUM WORKS BETTER IN THE PROCESS OF POLYMERIZATION.

MERCURY (SHORT WAVE UVB)

VISIBLE (LESS EFFICIENT IN VARNISHES AND STANDARD ADHESIVES)

METAL HALIDE (STANDARD UVA LONG WAVE)

METAL HALIDE DATA

ENERGY (365 nm): 105-150 mW / cm<sup>2</sup> (depends on the height)

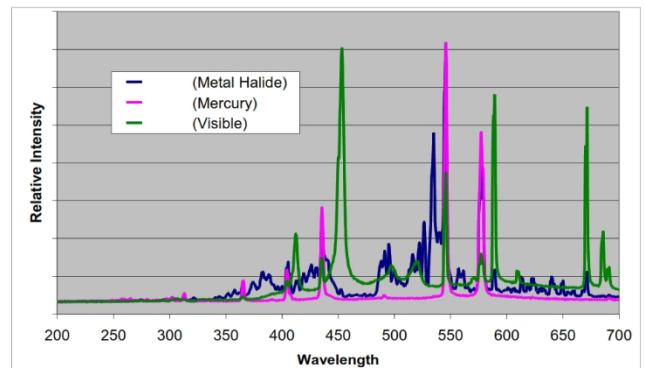
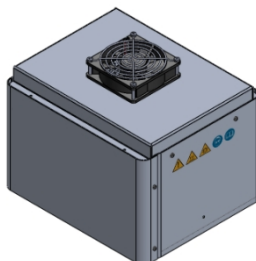
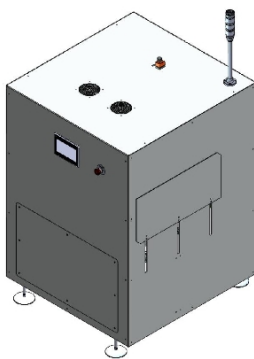
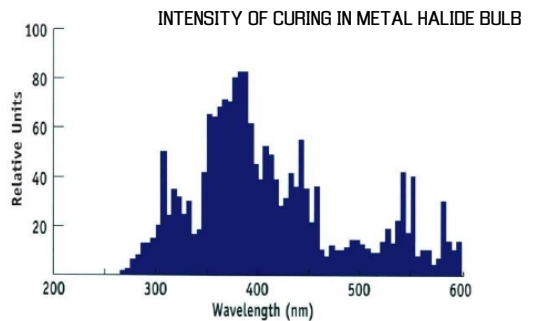
ENERGETIC DENSITY: 120 W / CM

AREA HOUSING LAMP: 250X250 mm. Other available

POWER LAMP: 400W

FEEDING: -110-230 V (50-60 HZ)

GUARANTEED DURATION BULB: 1000 HOURS



INTENSITY OF SPECTRAL CURING IN FUNCTION OF THE USED BULB